

InnoCielo Meridian Enterprise



General Product Overview

white paper

BlueCielo ECM Solutions
www.bluecieloecm.com
April 2007
Version 3.0

Table of Contents

1	InnoCielo Meridian Enterprise Introduction.....	3
2	A Suite of Client Interfaces for All Types of Users.....	3
3	Secure Access	4
4	Viewing and Redlining.....	5
5	Easy Storage and Quick Retrieval	5
6	Reference and Revision Management	6
7	Workflow and Work Areas.....	7
8	3D CAD Integration	8
9	Reporting, Archiving and Email Integration.....	10
10	BriefCase Functionality.....	11
11	Configuration and Maintenance Tools.....	12
12	Additional Modules	12
13	BlueCielo ECM Solutions	13
14	Questions?.....	13
15	Contact Info.....	13

1 InnoCielo Meridian Enterprise Introduction

InnoCielo Meridian Enterprise (formerly AutoManager Meridian) is the flagship product of BlueCielo ECM Solutions (formerly Cyco Software) for content management solutions in the CAD Generic, Manufacturing and Asset & Facility Management markets. InnoCielo Meridian Enterprise manages the life cycles of products or installations, controlling all technology-related data. It reduces engineering costs by increasing efficiency in the creation phase, and keeps maintenance costs low by making all information readily available and accessible. It integrates seamlessly into the user's daily environment so users can work the way they are used to. InnoCielo Meridian Enterprise allows a choice of database back-ends ranging from entry level Hypertrieve up to Microsoft SQL and Oracle. So besides ease of use, it is powerful, secure and extremely versatile.

2 A Suite of Client Interfaces for All Types of Users

To facilitate a broad range of users, InnoCielo Meridian Enterprise comes with a suite of clients:

- The PowerUser Client for the Engineer, Project Manager, etc who need all available functionality
- The Office Client for more office-oriented users
- The Web Client for remote users. For users that are not constantly connected to the network like remote- and laptop-users there is also the Offline Client.

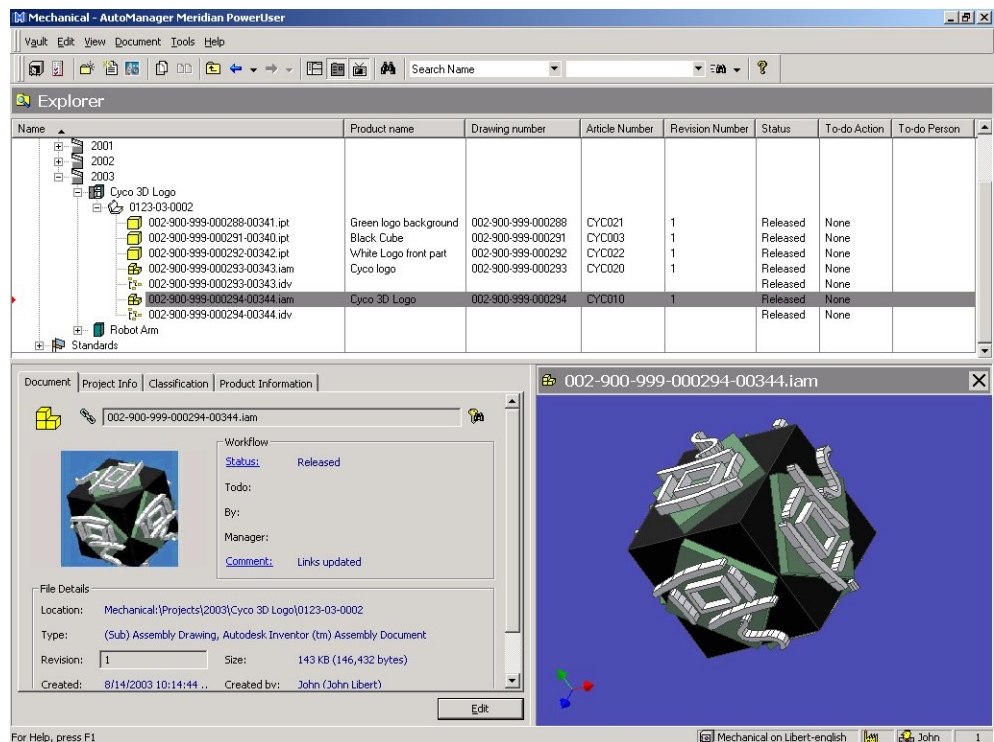


Figure 1 The InnoCielo Meridian Enterprise PowerUser

Application Integration provides direct access to InnoCielo Meridian Enterprise from within every application via the standard File Open and File Save dialogues. The CAD Integration provides bi-directional title block property links and reference management for AutoCAD and all its vertical applications, Autodesk Inventor, MicroStation and SolidWorks.

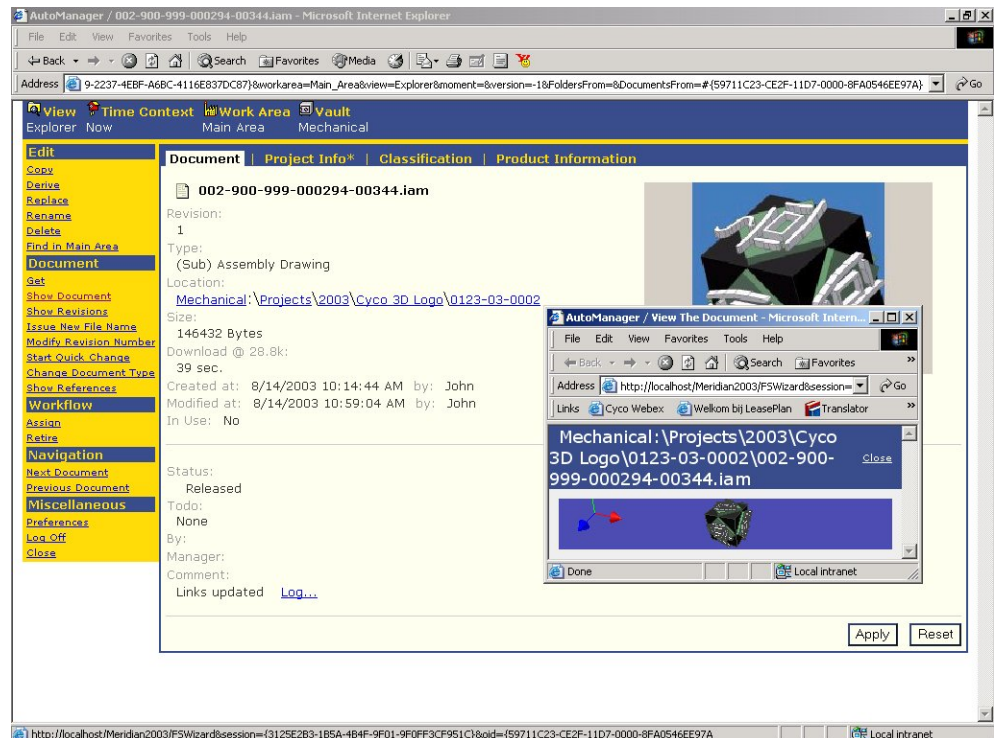


Figure 2 The InnoCielo Meridian Enterprise Web Client

3 Secure Access

InnoCielo Meridian Enterprise provides a secure storage environment for all documents and their related data. Access to the documents and their data is arranged by means of a role based security model that utilizes your existing Windows Users and User Groups.



Figure 3 Utilize Windows Users and User Groups

4 Viewing and Redlining

InnoCielo Meridian Enterprise features BlueCielo's own award-winning viewing technology. The viewer is capable of displaying over 250 different file formats including the mainstream CAD, Office and raster formats. External viewers like Adobe's PDF viewer, Autodesk Inventor viewer and The Advanced Viewer are also utilized to extend the supported file formats. Another powerful feature of the InnoCielo Meridian Enterprise viewer is the ability to redline documents. Not only does InnoCielo Meridian Enterprise handle redlining from in-house technology, but it is also capable of storing and managing redlines or markups from other viewers such as The Advanced Viewer and AutoVue.

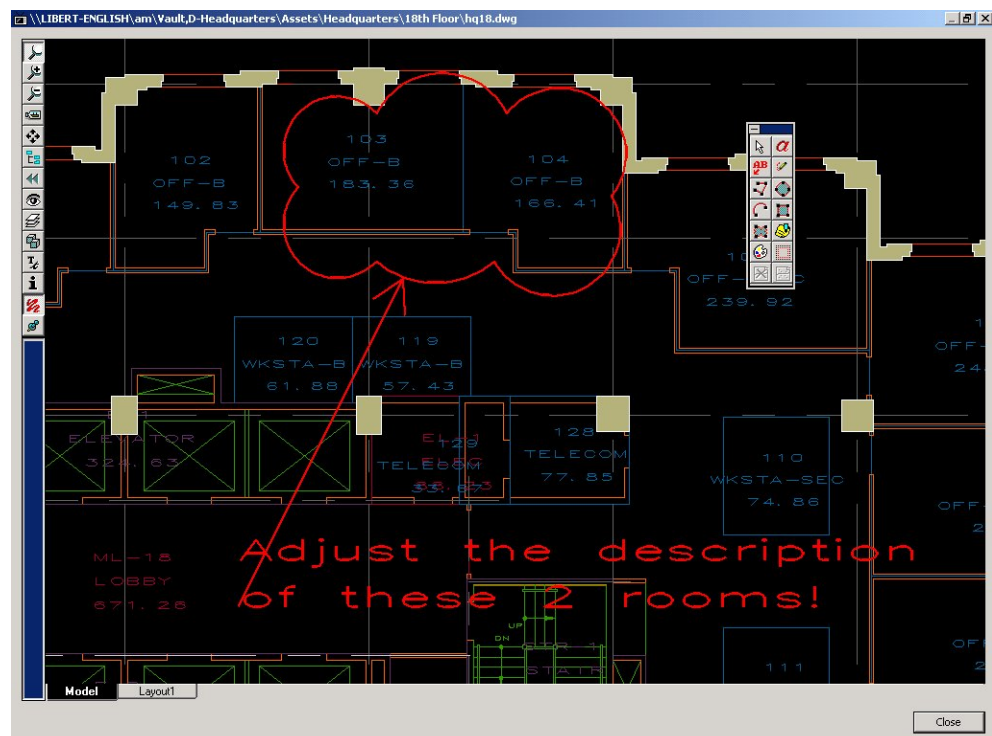


Figure 4 The viewer with redlining capabilities

5 Easy Storage and Quick Retrieval

Documents are organized in a structure called Explorer which is similar to a regular directory structure. In this Explorer, any document naming and location convention can be enforced. In addition to the Explorer, calculated views called Navigation Views can be configured providing the user with an overview of required documents. Not only is it possible to find your documents using Navigation Views, you can also use more conventional search methods to find your document. There are a number of different search possibilities:

- Quick Find – Is directly available from the main Client interface and allows you to enter simple search criteria such as a document name to find the necessary document
- Key Find – Allows you to search on a specific property. The key find properties can be configured in the Configurator
- Find Dialog – This is a more advanced search feature that adds some real searching power. You can customize a search to your needs by adding properties to search, restrict the search to certain Document Types and even save your search results in static or dynamic Collections.
- Full Text Search – Full Text Searching is fully integrated into the Find dialog. It gives you the possibility to search for strings that are found in the documents themselves.

- Global Search – Using this feature, you can search for documents that reside in other Vaults found on the server

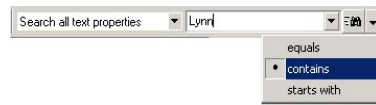


Figure 5 Quick Search

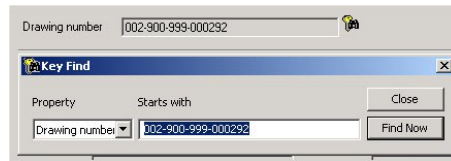


Figure 6 Key Find

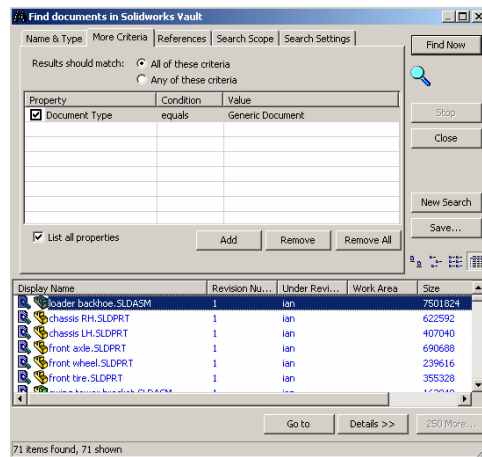
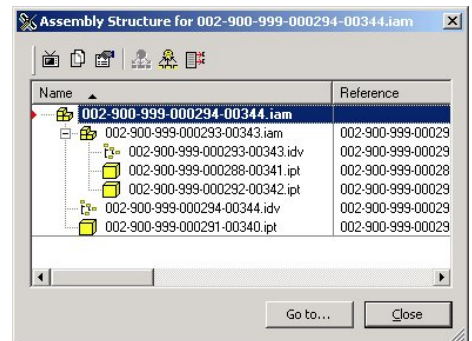


Figure 7 Find documents

Figure 8 Assembly Structure

6 Reference and Revision Management

InnoCielo Meridian Enterprise automatically keeps track of all references between CAD assemblies, subassemblies and parts. With these references, Assembly Structure and Where Used overviews are easily generated. Alongside these “standard” reference types, InnoCielo Meridian Enterprise also supports self-definable reference types that can be created between any kind of document. InnoCielo Meridian Enterprise also has the ability to keep track of all revisions of a document. Revisioning can be configured in such a way that a Manufacturing assembly is not automatically updated when a part is revised. However, in the Facility Management market a new revision of a reference drawing should immediately be updated in the main drawing. Both scenarios are fully supported by InnoCielo Meridian Enterprise. Also available is the Compare function which provides a powerful tool to compare two different revisions of a document.



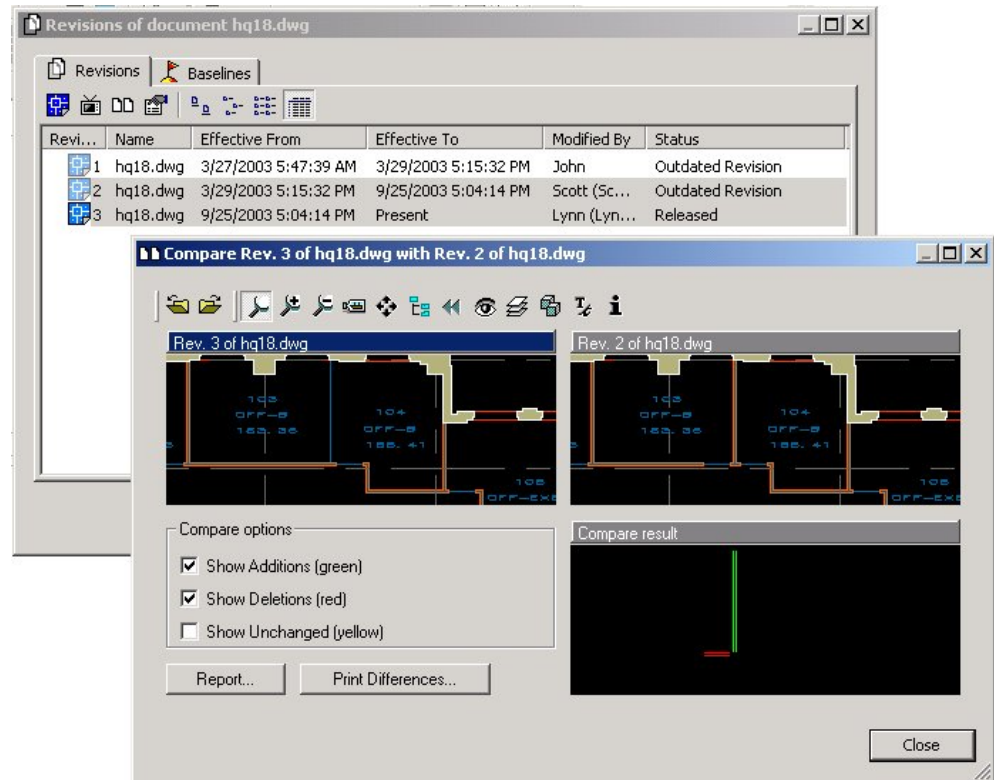


Figure 9 Graphical comparison of different revisions of a document

7 Workflow and Work Areas

InnoCielo Meridian Enterprise provides configurable document workflow based on so-called document types. This can mean that drawings go through a very formal approval cycle whereas sketches will not. In addition, one might also utilize the InnoCielo Meridian Enterprise Work Areas to allow a more project oriented working method. A Work Area can be seen as a separate "room" in which only authorized users can work on the relevant documents for a specific project.

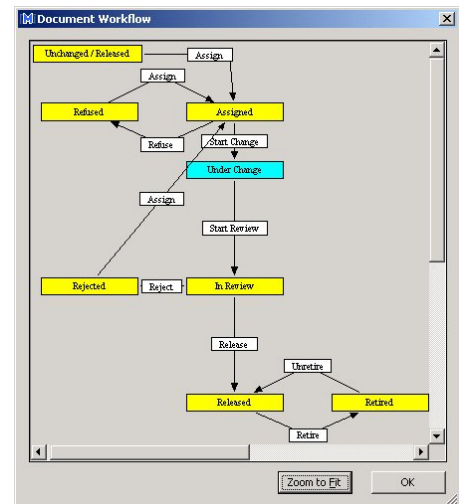


Figure 10 Document Workflow

8 3D CAD Integration

InnoCielo Meridian Enterprise makes working with leading 3D CAD packages like Autodesk Inventor and SolidWorks easy. The tight integration provides, among other things, bi-directional title block and property links and reference-management functionality like Derive and Replace. This allows changes in parts or subassemblies to be updated in the (main) assembly when appropriate. In other words, one can easily create new versions of an existing product while maintaining the complete set of documents of older versions. To copy an entire assembly a Duplicator function is available. The Duplicator will not only copy the assembly and all referenced parts but also update all references to the copied parts. This results in an independent copy of the original assembly.

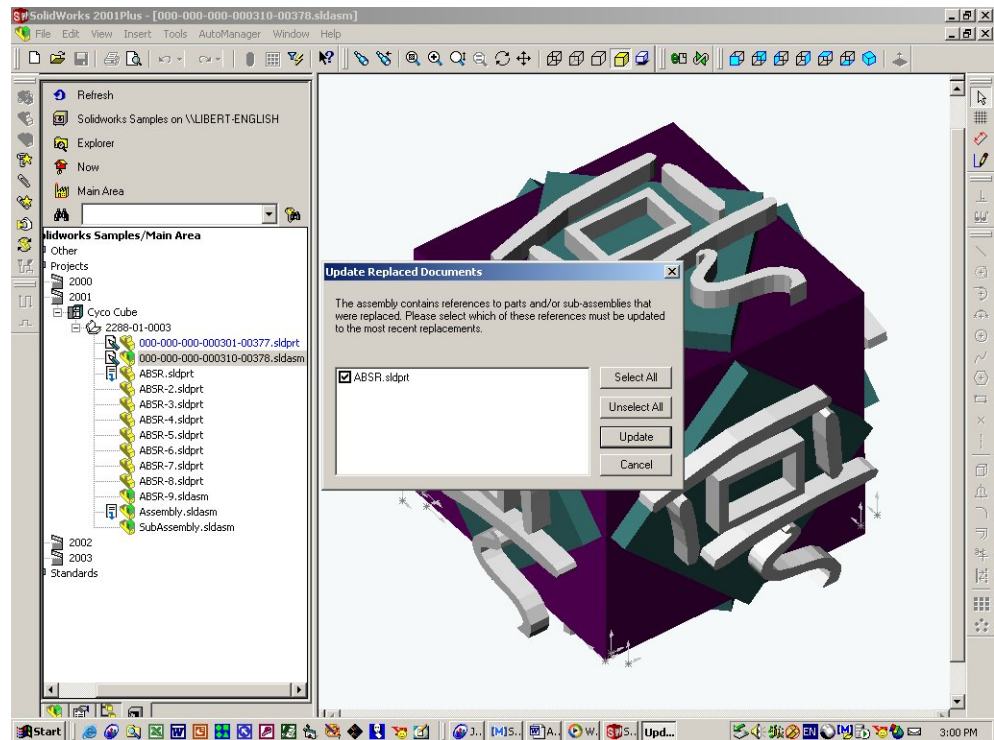


Figure 11 Update a replaced part

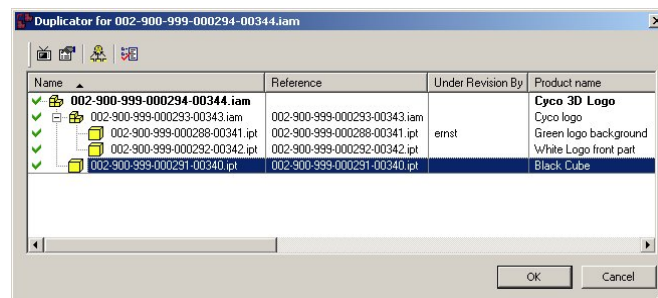


Figure 12 Duplicate an entire assembly

Along with the above mentioned functionality, you are also provided with a mini-client inside SolidWorks and Autodesk Inventor. With this client you can directly affect documents residing in the Vault. You can for instance, change the workflow of a document, access and edit its InnoCielo Meridian Enterprise properties or open a different document all without having to leave SolidWorks or Autodesk Inventor. See Figures 11 and 13.

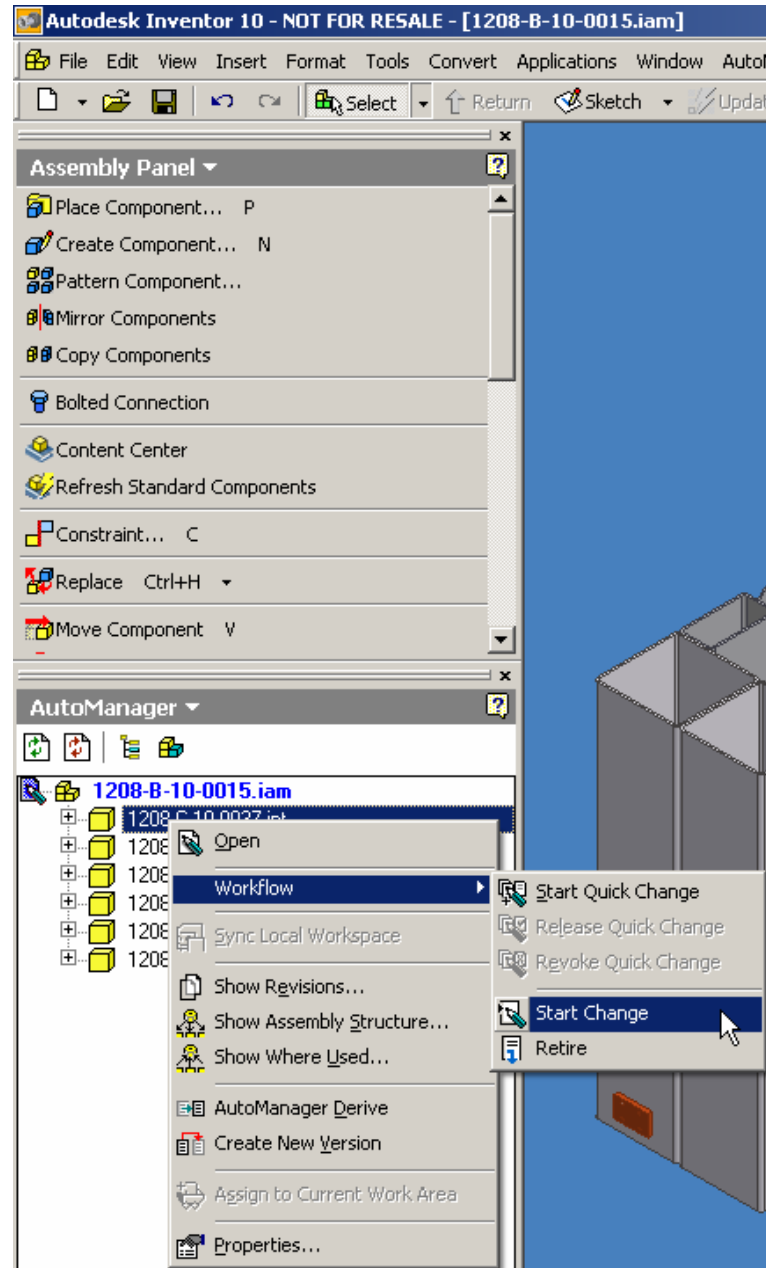


Figure 13 Autodesk Inventor Integration

9 Reporting, Archiving and Email Integration

InnoCielo Meridian Enterprise features extensive and highly configurable reporting thus allowing you to create any kind of report. You can even include thumbnails of the documents themselves!

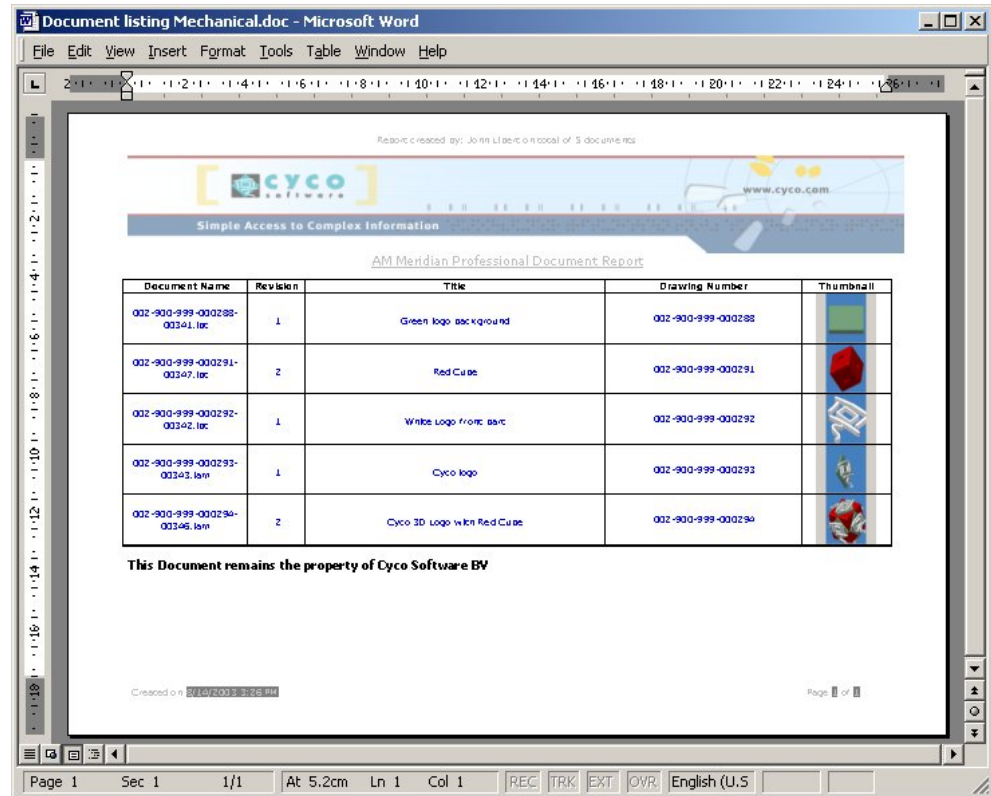


Figure 14 Reporting can even include thumbnails

Archiving will allow you to create backups from either specific document versions to complete projects. After the archive has been created you can choose to keep all data online, keep the database information online while the files themselves are removed, or remove all data. InnoCielo Meridian Enterprise's email integration is very flexible and supports virtually every email package.

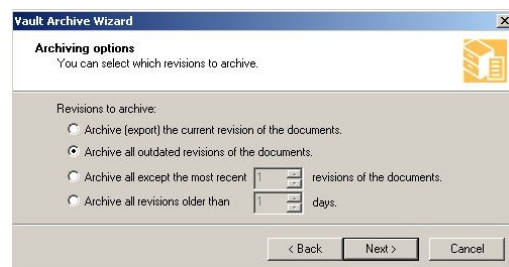


Figure 15 Flexible archiving

10 BriefCase Functionality

If you need to deal with third parties, InnoCielo Meridian Enterprise can help you keep track of documents that need to be sent to contractors. Using the BriefCase functionality you can check out a document or group of documents to send as a single compressed file to any subcontractors. BriefCases are created from Templates that can be configured in the Configurator. It is also possible to protect the data stored in the BriefCase with a password.

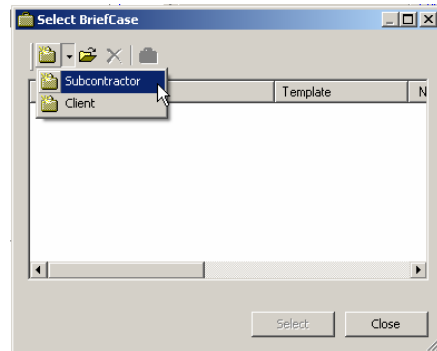


Figure 16 Creating a new BriefCase from a template

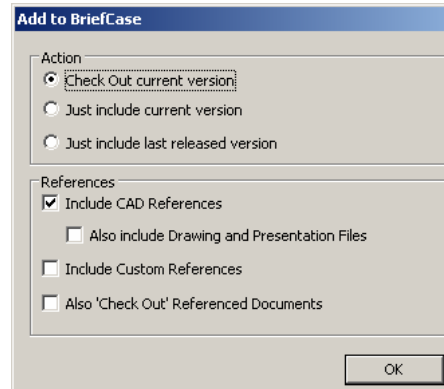


Figure 17 Options for adding documents to a BriefCase

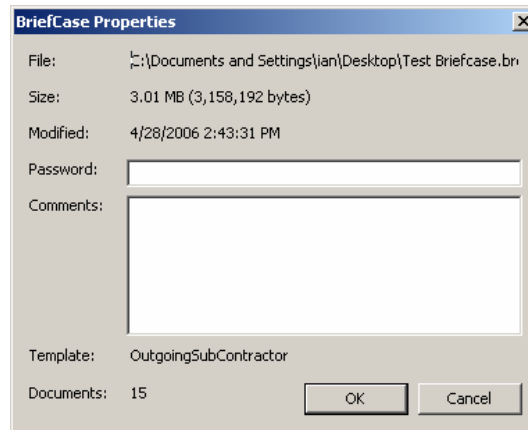


Figure 18 Add comments and a password to your BriefCase

You can also include some document properties with the BriefCase which are linked directly to the properties found in the InnoCielo Meridian Enterprise Vault.

Field Name	Value	Type
MAINDOC	[...]	BLOB
MAINDOCFN	1_4-0.875-UNC.ipt	FILENAME
MAINDOCLONGFN	1_4-0.875-UNC.ipt	FILENAME

Figure 19 Mapped properties included in the BriefCase

Mapping of these fields is completely customizable from the Configurator.

11 Configuration and Maintenance Tools

InnoCielo Meridian Enterprise comes with a complete toolset allowing you to configure and maintain your installation. All these tools are described in detail in the extensive documentation shipped along with the installation CD.

12 Additional Modules

To further expand InnoCielo Meridian Enterprise functionality the following modules are available:

- Use BlueCielo's InnoCielo Publisher to publish documents from any InnoCielo Meridian Enterprise vault to other locations, enterprises or document management systems like Documentum, SAP, Lotus Notes, etc or collaboration platforms like Autodesk Streamline or Microsoft SharePoint. Documents can be published in their native format or can be rendered towards for example low weight formats or formats that will protect the intellectual property. In this way engineering documents and data can be made available to external parties in exactly the shape and way as required by the circumstances.
- BlueCielo's Asset Management Module provides plant owners the much required functionality to relate the technical documentation in a simple and efficient way to their assets. Both the engineering department and the maintenance department will greatly benefit from these relationships by having all relevant documents immediately available. For engineering the documents can be found by asset number, providing immediate insight into document completeness to comply with applying regulations. For maintenance a work order is completed with all up-to-date asset-related technical documentation, with zero search time.
- BlueCielo's InnoCielo Advanced Viewer provides, along with other supported file formats, the ability to accurately view MicroStation (DGN) drawing files. Not only is it possible to view MicroStation drawings, but you will also be able to create and store redlines to enhance collaboration and cut down on printing costs and time.
- BlueCielo's Global Collaboration Framework allows for real-time 3D CAD collaboration between different design and engineering sites regardless of their location in the world. Ownership and ability to change assemblies, subassemblies and/or parts is at any moment clear and unambiguous. Document access is guaranteed by either scheduled replication or manual push or pull scenarios, so finally 3D design teams can truly and efficiently collaborate regardless of their location in the world.
- InnoCielo Meridian Enterprise's FDA module has been designed as a configurable add-on, implemented with consulting services, made for rapid and easy deployment to manage GMP controlled engineering documents with re-configured templates, workflows and lifecycles which drastically improve implementation speed to comply with FDA 21 CFR Part 11.



13 BlueCielo ECM Solutions

BlueCielo ECM Solutions (formerly Cyco Software) provides Engineering Content Management (ECM) solutions for multiple vertical industries, including utilities, oil & gas, petrochemical, pharmaceutical, government, transportation and process and discrete manufacturing. BlueCielo has over two decades of industry experience with more than 275,000 users in 50+ countries worldwide. The company has offices in the USA, UK, Russia, Germany, and the Netherlands and an extensive global network of established partners. BlueCielo ensures a high level of service and support on a truly worldwide scale for its leading software solutions InnoCielo Meridian Enterprise and InnoCielo Teamwork (formerly AutoManager Meridian and AutoManager TeamWork).

14 Questions?

For further information on this subject or about BlueCielo, please feel free to contact us by phone, email info@bluecieloecm.com or visit our websites.

15 Contact Info

Corporate Headquarters
BlueCielo ECM Solutions
Handelskade 49
2288 BA Rijswijk
The Netherlands
T +31 70 413 37 00
F +31 70 413 37 01
info@bluecieloecm.com
www.bluecieloecm.com

Americas
2400 Lake Park Drive
Suite 450
Atlanta, GA 30080
USA
Toll-Free 800 323 29 26
T +1 404 634 33 02
F +1 404 633 46 04
info@bluecieloecm.com
www.bluecieloecm.com

Europe, Asia, Pacific Rim,
Middle East, Africa
Handelskade 49
2288 BA Rijswijk
The Netherlands
T +31 70 413 37 00
F +31 70 413 37 01
info@bluecieloecm.com
Benelux: www.bluecielo.nl

DACH
Essener Strasse 5
46047 Oberhausen
Germany
T +49 208 305 85 00
F +49 208 305 85 025
info@bluecieloecm.com
www.bluecielo.de

United Kingdom, Ireland
Empress Business Centre
380 Chester Road
Manchester
M16 9EA
United Kingdom
T +44 161 877 55 79
F +44 161 877 55 80
info@bluecieloecm.com
www.bluecielo.co.uk

Russia, Russia and CIS countries
Korolev Street 6
249030 Obninsk
Kaluga region
Russia
T +7 (48439) 63079
F +7 (48439) 65095
info@bluecielo.ru
www.bluecielo.ru