



CAVITY MONITORING SYSTEM

Cavity Monitoring System

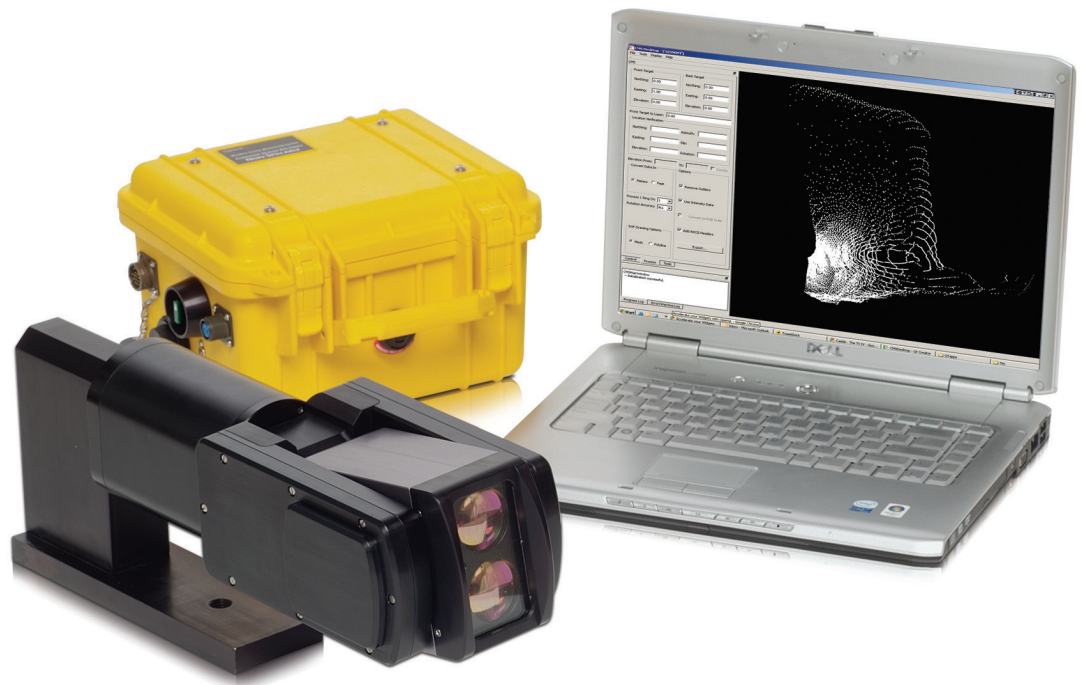
Summary Specification Sheet

Key Features

- Measurements to non-cooperative targets
- User-friendly operation
- Real-time data visualization
- Automated leveling
- Fast data acquisition rate
- 360° x 300° field of view
- Fast, accurate, precise 3D models of cavities
- Safe monitoring of inaccessible areas

Benefits

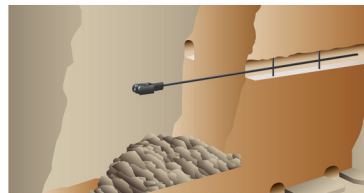
- Increase stope production
- Reduce dilution
- Calculate backfill volume
- Investigate backfill and blast efficiency



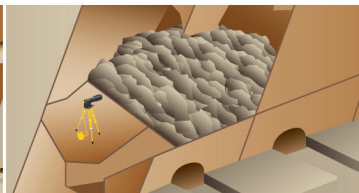
▶ The CMS Advantage

Optech's Cavity Monitoring System has revolutionized the surveying of underground cavities. Developed for underground mining environments, the CMS delivers a fast, accurate, 3D surveying solution in a configuration that meets the needs of working underground – compact and rugged, with sealed optics and specialized accessories.

CMS



▶ Stope Method



▶ Caving Method



▶ Vertical Method



Cavity Monitoring System

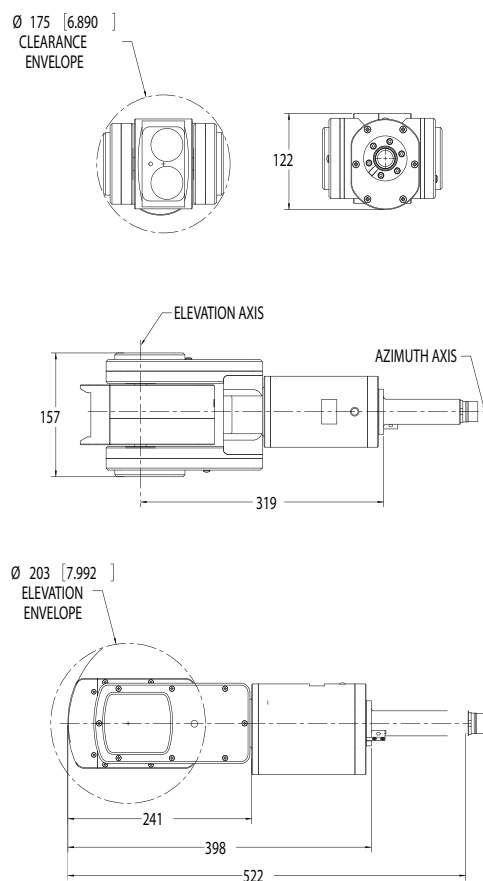


The CMS Advantage

The CMS collects thousands of accurately located points that are used to determine a cavity's size, orientation and volume, and to create detailed engineering drawings. Universally accepted data formats ensure that CMS data can be used in any software workflow.

Developed in the 1980s, and patent-protected since then, the Optech Cavity Monitoring System (CMS) has become synonymous with underground surveying. With hundreds of systems shipped worldwide, the CMS continues to provide fast, reliable and efficient scanning and monitoring of underground cavities.

Parameter	V400 Specification
Range capability	200 m @ 20%; 500 m @ 90%
Minimum range	15 cm
Horizontal angular range	360°
Vertical angular range	300°
Range accuracy	±2 cm
Range resolution	1 mm
Angular accuracy	0.1°
Angular resolution	0.022°
Min step size (azim and elev)	0.5°
Data update rate	200 Hz
Scan time (1 x 1 degree)	6 min
Points per scan (360 x 300 degrees)	54000
Operating temperature	-10° to +50°C
Weight, scanning head	5.4 kg
Weight, battery case	7.6 kg
Wireless connectivity	Yes
Operating power	24 VDC
Scanner diameter	175 mm
Water and dust protection	IP65 ¹
Optional Accessories	
Vertical Insertion Package	PC/PDA
Volume Calculation Software	Boom + Mast Sets
Tripod Mounting Bracket	Backpack



¹ Designed to meet IP65

E&OE. All specifications subject to change without notice. Printed in Canada. 100224



Optech Incorporated

300 Interchange Way, Vaughan, Ontario, L4K 5Z8, Canada

Tel: +1 905 660 0808 Fax: +1 905 660 0829

www.optech.ca

